

farhadshahnia@yahoo.com

kr\_milani@yahoo.com

<sup>1</sup>(ABC)

(CC)

---

<sup>1</sup> Arial Bundled Cable  
<sup>2</sup> Covered Conductor



:

:

:

- 
- 
- 
- 
- 

:

( )

:

- 
- 

- 
- 
- 
- 

%

"

"

( )

: ( )

: ( )

( )

% ) . . .

(

% ( ) . . .

% . . .

( )

%

( ) . .

( ) . .

%

. . .

( )

%

( )

%

. . .

( )

( )

MVLC

XLPE

/



:( )

(Covered Conductor, CCT)

▪

(Aerial Bundled Cable)

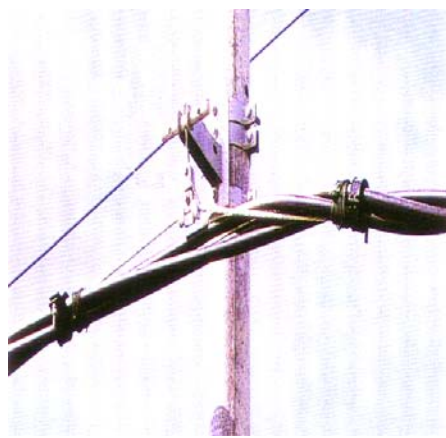
▪

(Spacer Cable)

▪



Spacer C



ABC

CC :



:( )

XLPE

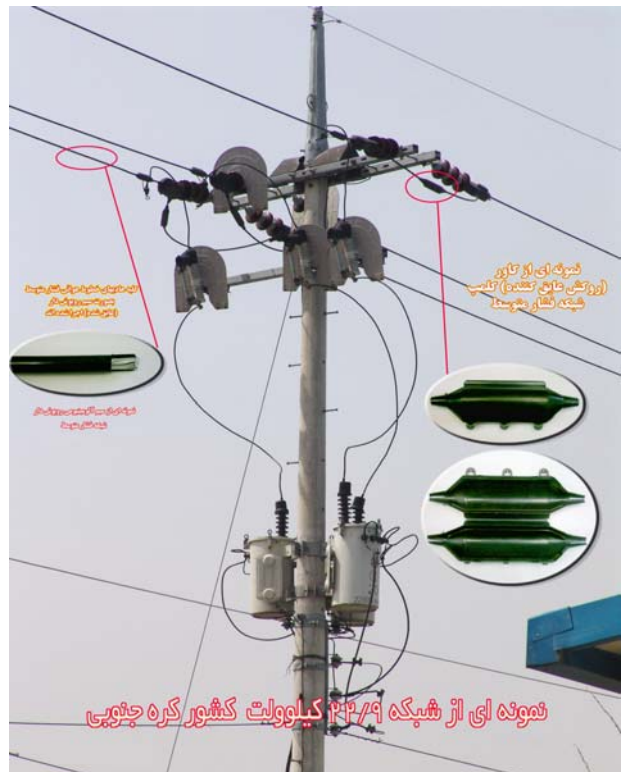
XLPE

(TR-XLPE)

( )

(UV)

( )



:( )

( )



: ( )

/

...

( )



:( )

:

- 
- 
- 
- 
- 
- 
- 
- 
- 

CEMIG

/

( )

/

SAIDI

( )

/

/

:( )

---



---



---



---



---



---



---

/

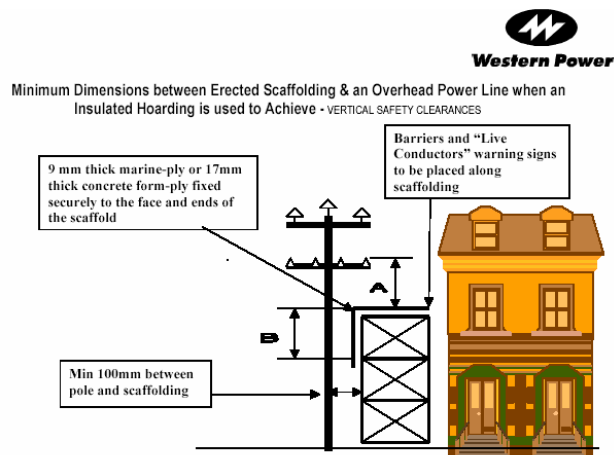
/

/

CEMIG		:( )	
( )			
/	/		
/	/	/	/
/	/	/	/

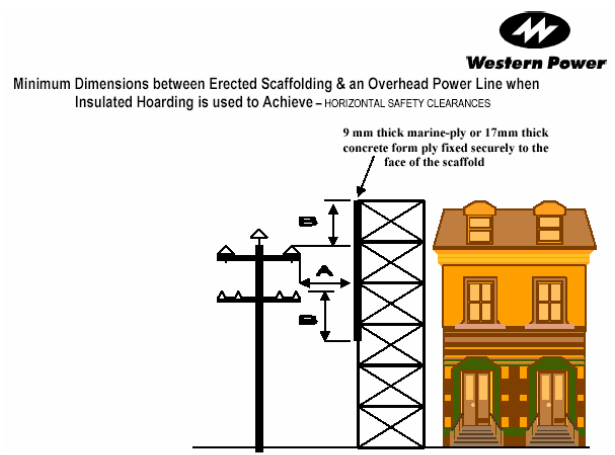
(Western Power)

( )  
CC ABC



Minimum Dimensions for "A"		Minimum Dimensions for "B"	
LV Insulated (ABC) & Covered	0.3m	LV Insulated (ABC) & Covered	1.0m
LV Bare	1.0m	LV Bare	2.0m
6600 – 33000V ABC	1.5m	6600 – 33000V ABC	2.4m
6600 – 33000V * Covered	1.5m	6600 – 33000V * Covered	2.4m
6600 – 33000V Bare	2.4m	6600 – 33000V Bare	2.4m
66000V up to and including 132000V	4.5m	66000V up to and including 132000V	2.4m

CC ABC



Minimum Dimensions for "A"		Minimum Dimensions for "B"	
LV Insulated (ABC) & Covered	0.3m	LV Insulated (ABC) & Covered	1.0m
LV Bare	0.6m	LV Bare	2.0m
6600 – 33000V ABC	0.6m	6600 – 33000V ABC	2.0m
6600 – 33000V * Covered	0.6m	6600 – 33000V * Covered	2.4m
6600 – 33000V Bare	1.5m	6600 – 33000V Bare	2.4m
66000V up to and including 132000V	2.5m	66000V up to and including 132000V	2.4m

:( )

%

( )

:( )

/	/	Southern Electricity
	/	Eastern Electricity
	/	South Western Electricity
	/	South Wales Electricity
/	/	East Midlands Electricity
/	/	Aquila Networks
/	/	Northern Electric

" " [ ]  
" " [ ]  
" " [ ]  
" " [ ]  
" " [ ]  
" " [ ]  
" " [ ]

" " [ ]

" " [ ]

" " [ ]

" " [ ]

- [11] Report on "Research & Analysis of a Possible Safety Improvement Involving the Selective Replacement of 11 kV/LV Bare-Wire Overhead Lines with ones having Covered/Insulated Conductors", by Alan Walker, March 2004, Internet.
- [12] K. Alstad, S. Refsnaes, T. Bovre, H. Thomassen, "A new Overhead Line Concept Based on Covered Conductors", IEEE
- [13] H. Lehtinen, I. Lehtinen, A. Hinkkuri, "Research on Covered Medium Voltage Overhead Lines in Finland", Proc. of International CIRED 1989 Conference, pp. 179-184, 1989.
- [14] L. Voldhaug, C. Robertson, "MV Overhead Lines Using XLPE Covered Conductors- Scandinavian Experience and NORWEB Developments", IEE International Conference on The Reliability of Transmission and Distribution Equipment, pp. 52-60, March 1995.
- [15] C.C. Landinger, J.W. McAuliffe, A.L. Clapp, J.B. Dagenhart, W.A. Thue, "Safety Considerations of Aerial Systems Using Insulated and Covered Wire and Cable", IEEE Trans. On Power Delivery, Vol. 12, No. 2, pp. 1012-1016, April 1997.
- [16] Technical Report of Western Power Company, "Request to Work Near Overhead Power Lines Applicant Information Pack for Working in the Vicinity of Power Lines Including Scaffolding & Mobile Plant", Issued by Networks Customer Services, Prepared by DIA Technical Services, Western Power Corporation, Australia, 2004.
- [17] KEPCO Annual Report, Power Distribution Business, page 24, 2003. <http://www.kepco.co.kr>.
- [18] KEPCO Training Program for Distribution Sector of "AREC", Chapter 4; Overhead Distribution System by Lee Hun, Part 2; Historical strategies for the enhancement to reliability uses the cover conductor, March 2005.